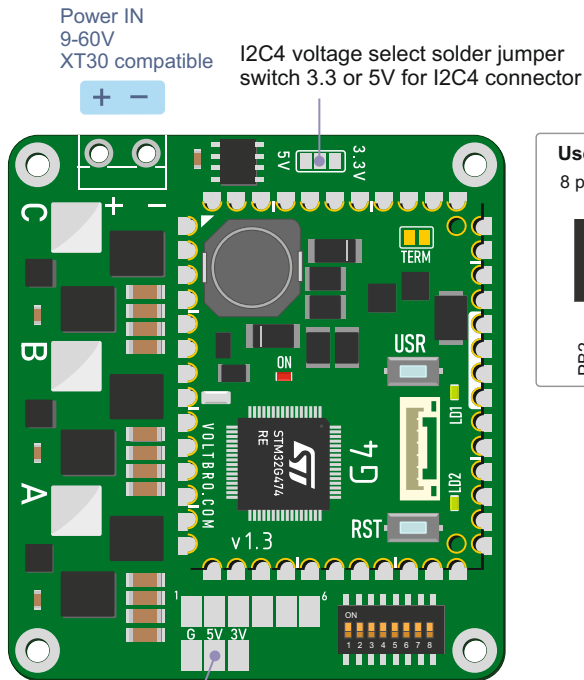
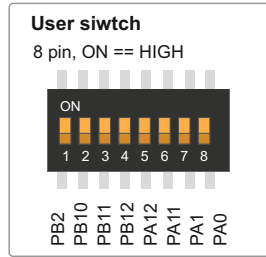


# VBCore BLDC Driver 30A v1.2



Solder pads  
Use common pins with user switch (1-6 inputs)  
**NOTE:** put switches off in case of using solder pads

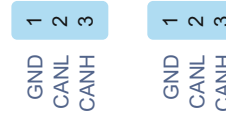
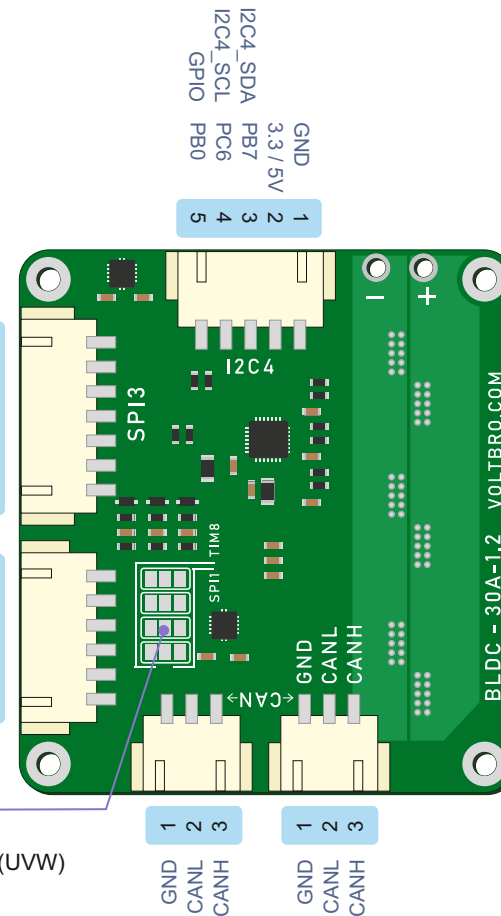


GND	1
5V	2
TIM8_CH1	PB6
TIM8_CH2	PC7
TIM8_CH3	PC8
NC	NC

SPI3_MISO	PC11
SPI3_MOSI	PC12
SPI3_SCK	PC10
SPI3_NSS	PA15
SPI3_NSS2	PB4

Solder jump switch  
SPI1 / TIM8  
Use TIM8 for Hall sensors (UVW)

GND	1
5V	2
SPI1_MISO	PA6
SPI1_MOSI	PA7
SPI1_SCK	PA5
SPI1_NSS	PA4



## VBCore BLDC Driver v1.2

VIN: 6-60V  
MAX CURRENT 30A  
MCU: VB32G4 (STM32G474RE)  
BLDC DRIVER: DRV8328B  
SPI encoder interface  
UVW Hall encoder interface  
I2C encoder interface  
Current sensors  
EEPROM  
CAN / CAN-FD  
Dimensions: 51x56mm  
Mount holes: 45x50mm D2.5 mm

## NOTES:

1. SPI1 and SPI3 connectors connected to controller via level shifters
2. Hall sensors connectors connected to controller via filter
3. I2C4 SCL and SDA lines pulled up - **DON'T USE** internal pull-up
4. To enable power on I2C4 line (including EEPROM) close the voltage select solder jumper



www.vbcores.com  
Electronics for robotics  
research and development

## Motor driver

DRV8328B 4.5 to 60 V  
Three-phase BLDC Gate Driver

Controll	PIN	Timer
INLA	PB13	TIM1_CH1N
INLB	PB14	TIM1_CH2N
INLC	PB15	TIM1_CH3N
INHA	PA8	TIM1_CH1
INHB	PA9	TIM1_CH2
INHC	PA10	TIM1_CH3
NSLEEP	PB3	
NFAULT	PB5	

## Current sensor

ACS711KEXLT-31AB-T  
Range: ± 31A  
Sensitivity: 45mV/A

Controll	PIN	ADC
I_A	PC1	ADC12_IN7
I_B	PC2	ADC12_IN8
I_C	PC3	ADC12_IN9

## EEPROM

256K  
AT24C256C-SSHL-T

Controll	PIN	I2C
A0	GND	
A1	GND	
A2	GND	
SCL	PC6	I2C4_SCL
SDA	PB7	I2C4_SDA

## Voltage control

Resistive voltage divider 16:1

Controll	PIN	ADC
V input	PC0	ADC12_IN6